

CONCEPTUAL DESIGN ONLY
NOT FOR CONSTRUCTION

- A WHITE 4" WIDTH
- B WHITE 6" WIDTH
- C WHITE 6" WIDTH (2' SKIP, 6' GAP)
- D WHITE 8" WIDTH, 20' SPACING @ 45°
- E WHITE 24" WIDTH
- F WHITE 24" WIDTH, 2' SPACING (CROSSWALK)
- G YELLOW 4" WIDTH, DOUBLE LINE, 4" SPACE
- H YELLOW 4" WIDTH, SOLID LINE/10' SKIP, 30' GAP, 4" SPACE
- I YELLOW 8" WIDTH, 30' SPACING @ 45°
- J WHITE TURN ARROW 8'
- K WHITE TWO WAY LEFT TURN ARROWS 8'
- L HELMETED BICYCLIST SYMBOL & ARROW



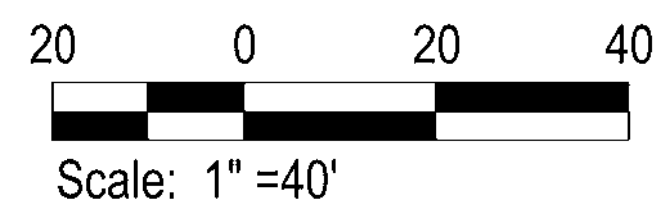
PROPOSED LANE CONFIGURATION

PROPOSED LANE CONFIGURATION

MT CLINTON PIKE

MT CLINTON PIKE

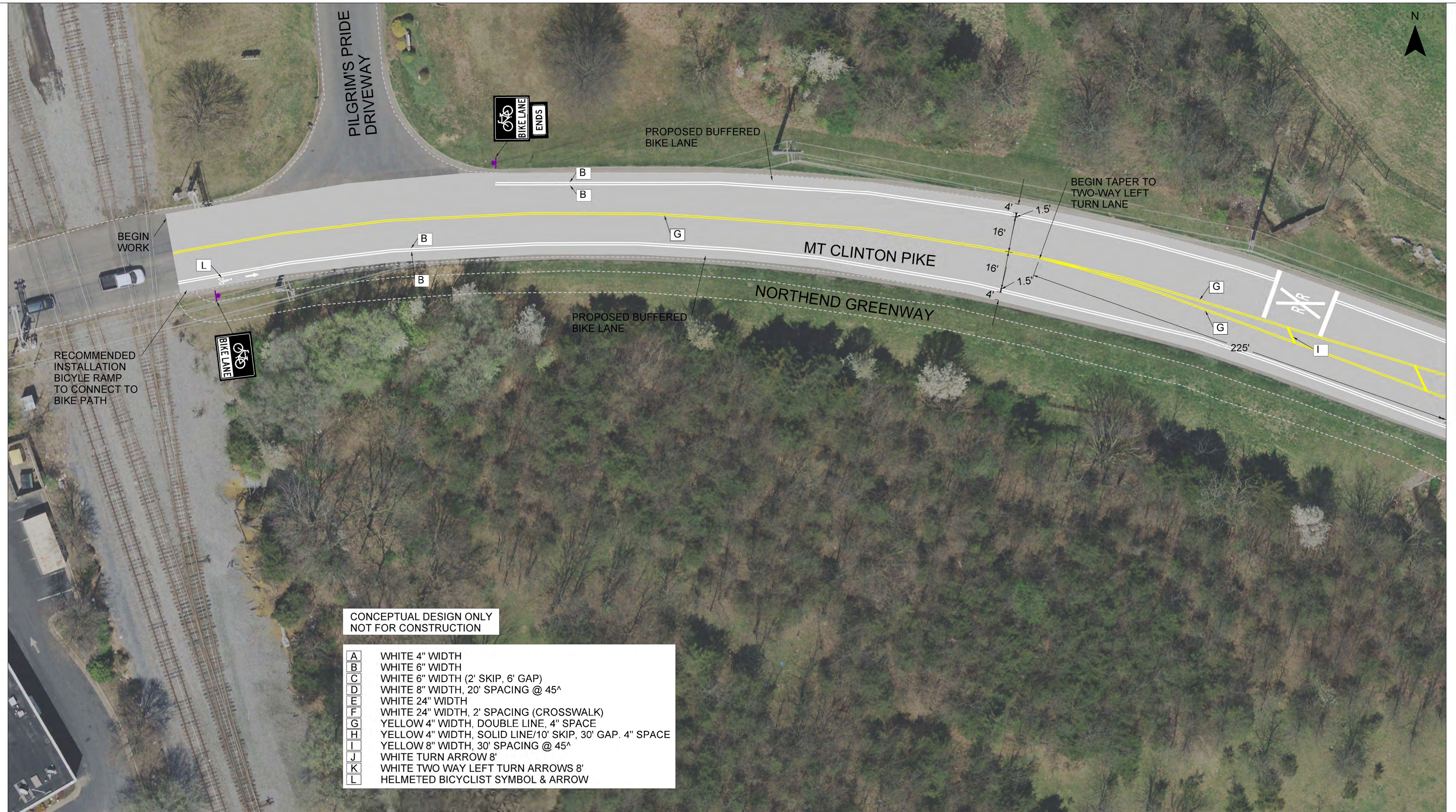
VIRGINIA AVE
42



Mt Clinton Pike Road Reconfiguration Concept
Harrisonburg, Virginia

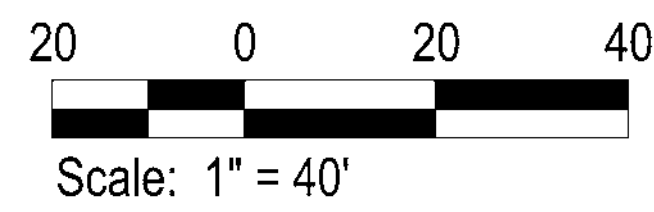
Figure
1

PL2121605 - VDOT TMFD On-Call312 - Mt. Clinton PI



CONCEPTUAL DESIGN ONLY
NOT FOR CONSTRUCTION

A	WHITE 4" WIDTH
B	WHITE 6" WIDTH
C	WHITE 6" WIDTH (2' SKIP, 6' GAP)
D	WHITE 8" WIDTH, 20' SPACING @ 45°
E	WHITE 24" WIDTH
F	WHITE 24" WIDTH, 2' SPACING (CROSSWALK)
G	YELLOW 4" WIDTH, DOUBLE LINE, 4" SPACE
H	YELLOW 4" WIDTH, SOLID LINE/10' SKIP, 30' GAP, 4" SPACE
I	YELLOW 8" WIDTH, 30' SPACING @ 45°
J	WHITE TURN ARROW 8"
K	WHITE TWO WAY LEFT TURN ARROWS 8"
L	HELMETED BICYCLIST SYMBOL & ARROW



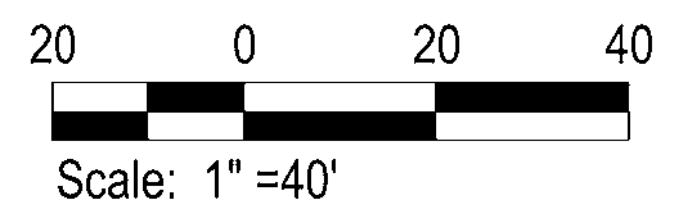
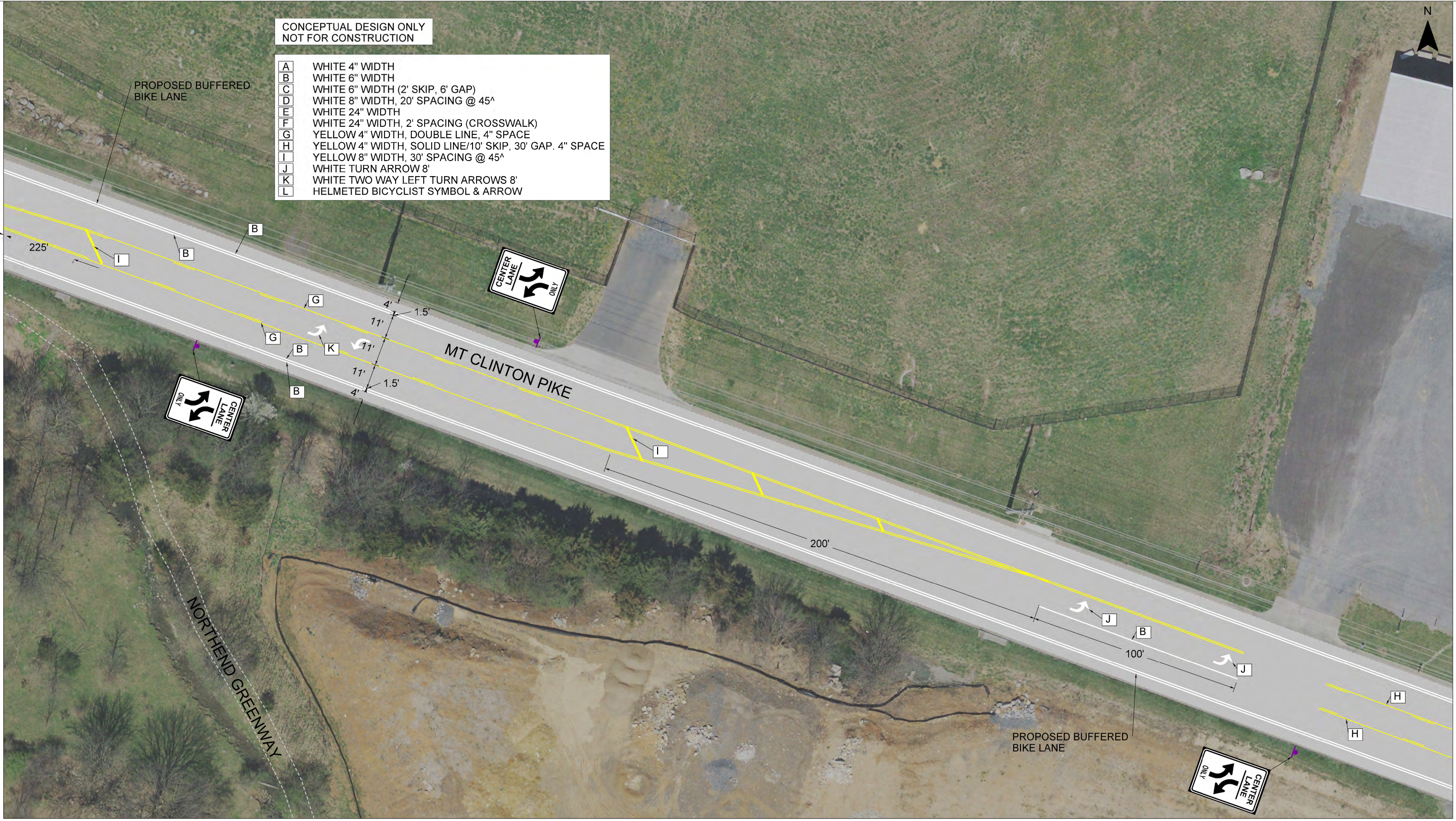
Mt Clinton Pike Road Reconfiguration Concept
Harrisonburg, Virginia

Figure
2

H:\2121605 - VDOT TMPD On-Call\312 - Mt. Clinton P.

CONCEPTUAL DESIGN ONLY
NOT FOR CONSTRUCTION

- A WHITE 4" WIDTH
- B WHITE 6" WIDTH
- C WHITE 6" WIDTH (2' SKIP, 6' GAP)
- D WHITE 8" WIDTH, 20' SPACING @ 45°
- E WHITE 24" WIDTH
- F WHITE 24" WIDTH, 2' SPACING (CROSSWALK)
- G YELLOW 4" WIDTH, DOUBLE LINE, 4" SPACE
- H YELLOW 4" WIDTH, SOLID LINE/10' SKIP, 30' GAP. 4" SPACE
- I YELLOW 8" WIDTH, 30' SPACING @ 45°
- J WHITE TURN ARROW 8'
- K WHITE TWO WAY LEFT TURN ARROWS 8'
- L HELMETED BICYCLIST SYMBOL & ARROW



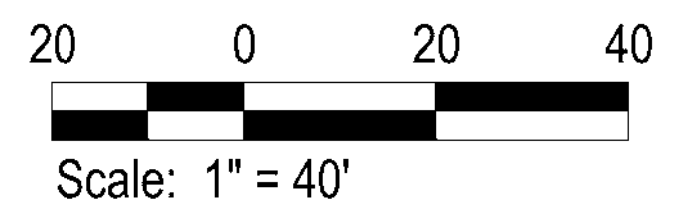
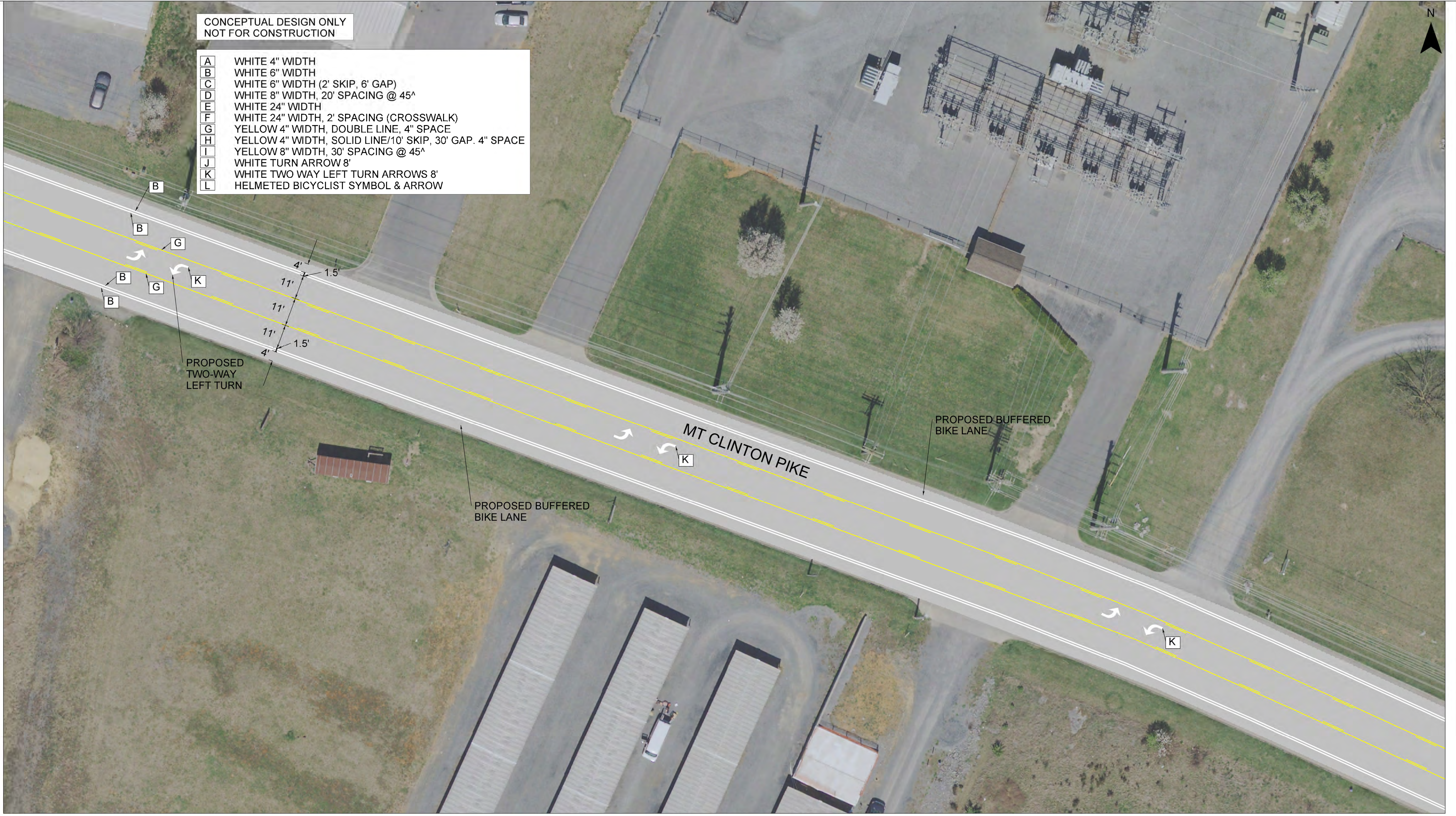
Mt Clinton Pike Road Reconfiguration Concept
Harrisonburg, Virginia

Figure
3

PL2121605 - VDOT TMAPD On-Call312 - Mt. Clinton PI

CONCEPTUAL DESIGN ONLY
NOT FOR CONSTRUCTION

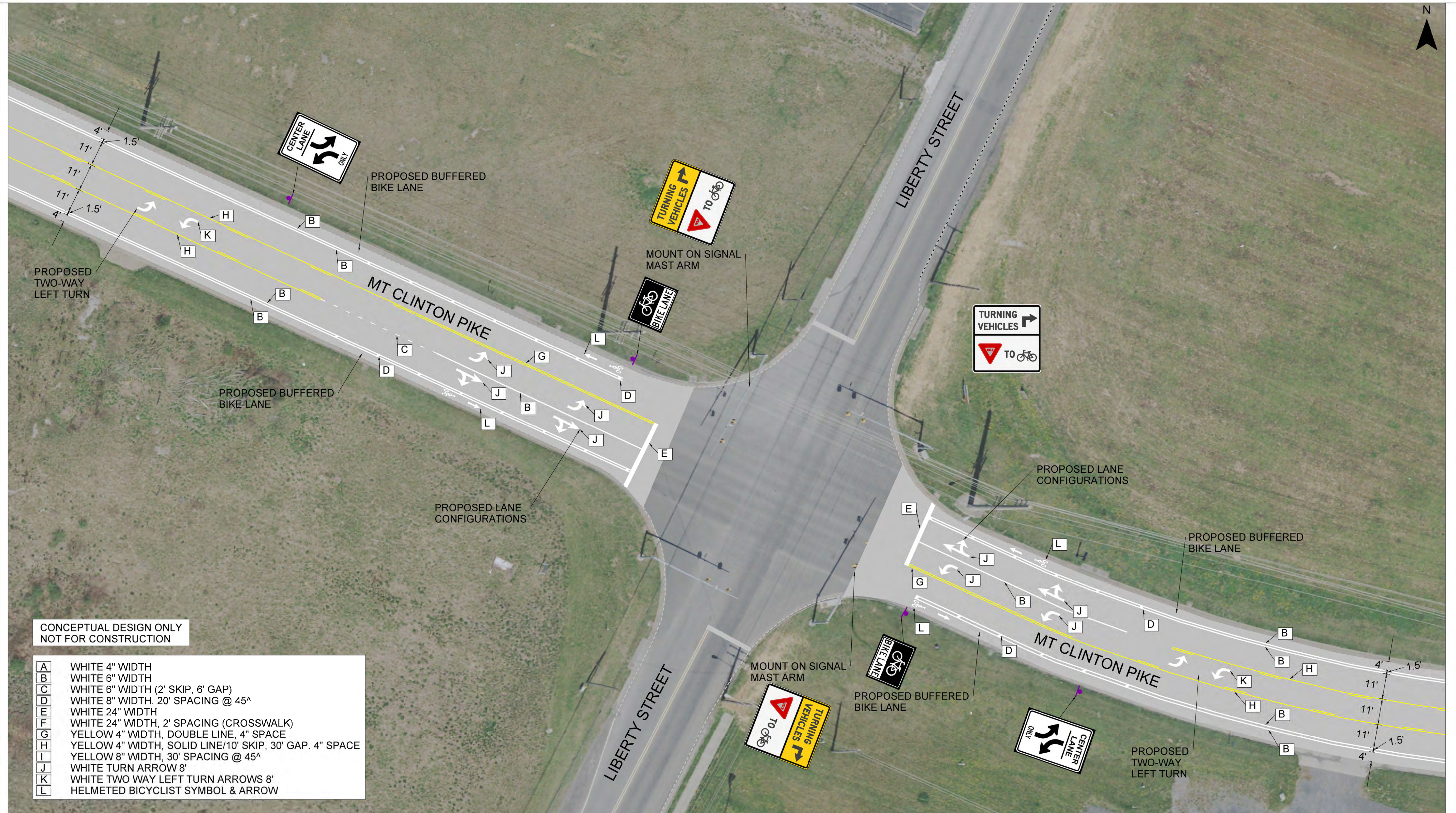
- A WHITE 4" WIDTH
- B WHITE 6" WIDTH
- C WHITE 6" WIDTH (2' SKIP, 6' GAP)
- D WHITE 8" WIDTH, 20' SPACING @ 45°
- E WHITE 24" WIDTH
- F WHITE 24" WIDTH, 2' SPACING (CROSSWALK)
- G YELLOW 4" WIDTH, DOUBLE LINE, 4" SPACE
- H YELLOW 4" WIDTH, SOLID LINE/10' SKIP, 30' GAP. 4" SPACE
- I YELLOW 8" WIDTH, 30' SPACING @ 45°
- J WHITE TURN ARROW 8'
- K WHITE TWO WAY LEFT TURN ARROWS 8'
- L HELMETED BICYCLIST SYMBOL & ARROW



Mt Clinton Pike Road Reconfiguration Concept
Harrisonburg, Virginia

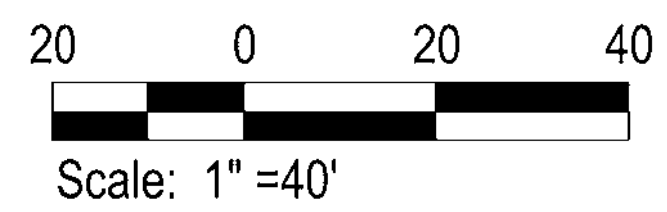
Figure
4

P:\2121605 - VDOT TMPD On-Call\312 - Mt. Clinton Pk



CONCEPTUAL DESIGN ONLY
NOT FOR CONSTRUCTION

- A WHITE 4" WIDTH
- B WHITE 6" WIDTH
- C WHITE 6" WIDTH (2' SKIP, 6' GAP)
- D WHITE 8" WIDTH, 20' SPACING @ 45°
- E WHITE 24" WIDTH
- F WHITE 24" WIDTH, 2' SPACING (CROSSWALK)
- G YELLOW 4" WIDTH, DOUBLE LINE, 4" SPACE
- H YELLOW 4" WIDTH, SOLID LINE/10' SKIP, 30' GAP. 4" SPACE
- I YELLOW 8" WIDTH, 30' SPACING @ 45°
- J WHITE TURN ARROW 8'
- K WHITE TWO WAY LEFT TURN ARROWS 8'
- L HELMETED BICYCLIST SYMBOL & ARROW



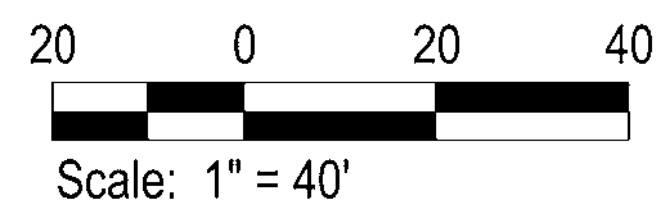
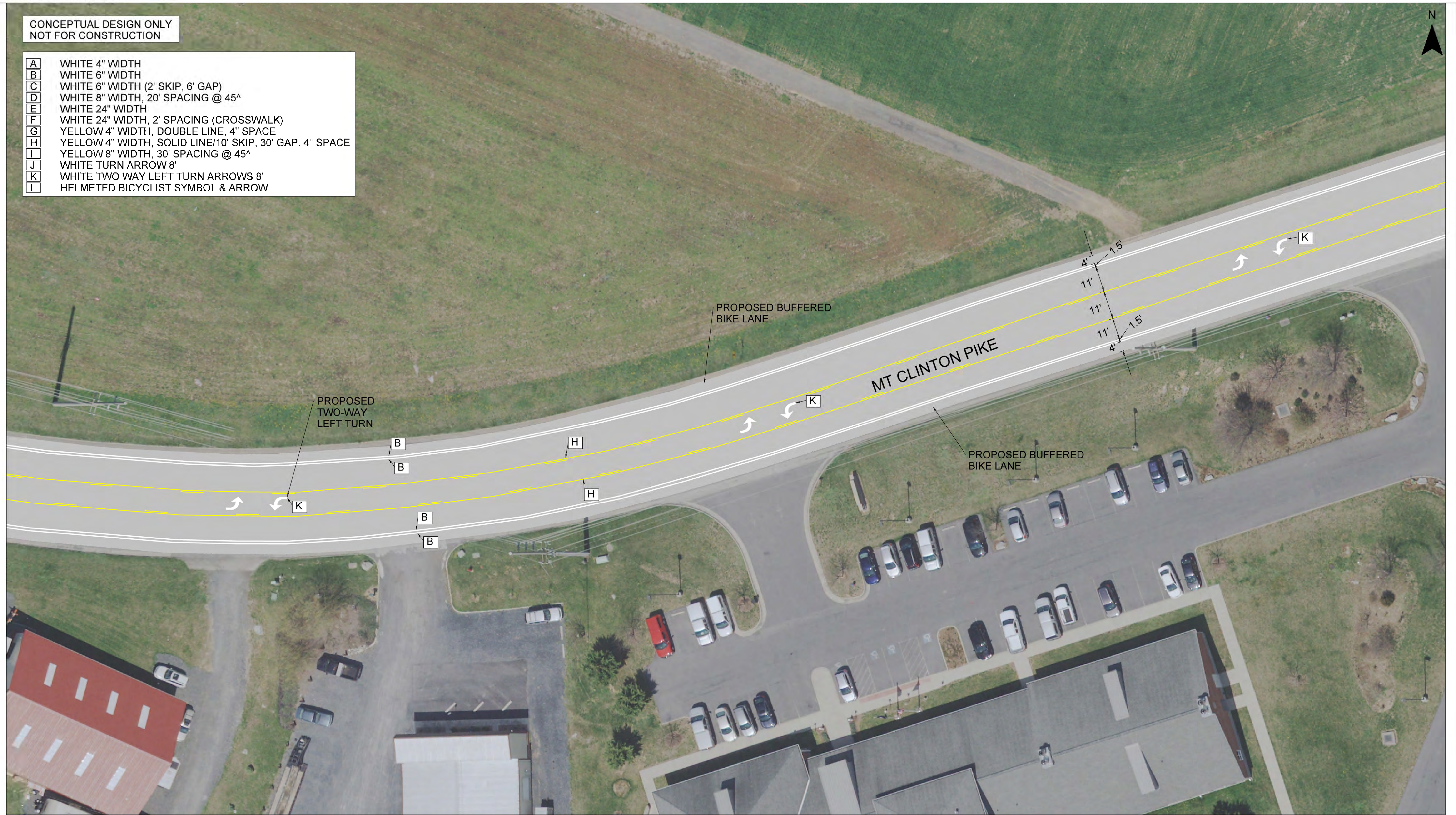
Mt Clinton Pike Road Reconfiguration Concept
Harrisonburg, Virginia

Figure
5

H:\2121605 - VDOT TRIPD On-Call\312 - Mt. Clinton PI

CONCEPTUAL DESIGN ONLY
NOT FOR CONSTRUCTION

- A WHITE 4" WIDTH
- B WHITE 6" WIDTH
- C WHITE 6" WIDTH (2' SKIP, 6' GAP)
- D WHITE 8" WIDTH, 20' SPACING @ 45°
- E WHITE 24" WIDTH
- F WHITE 24" WIDTH, 2' SPACING (CROSSWALK)
- G YELLOW 4" WIDTH, DOUBLE LINE, 4" SPACE
- H YELLOW 4" WIDTH, SOLID LINE/10' SKIP, 30' GAP, 4" SPACE
- I YELLOW 8" WIDTH, 30' SPACING @ 45°
- J WHITE TURN ARROW 8'
- K WHITE TWO WAY LEFT TURN ARROWS 8'
- L HELMETED BICYCLIST SYMBOL & ARROW



Mt Clinton Pike Road Reconfiguration Concept
Harrisonburg, Virginia

Figure
6

CONCEPTUAL DESIGN ONLY
NOT FOR CONSTRUCTION

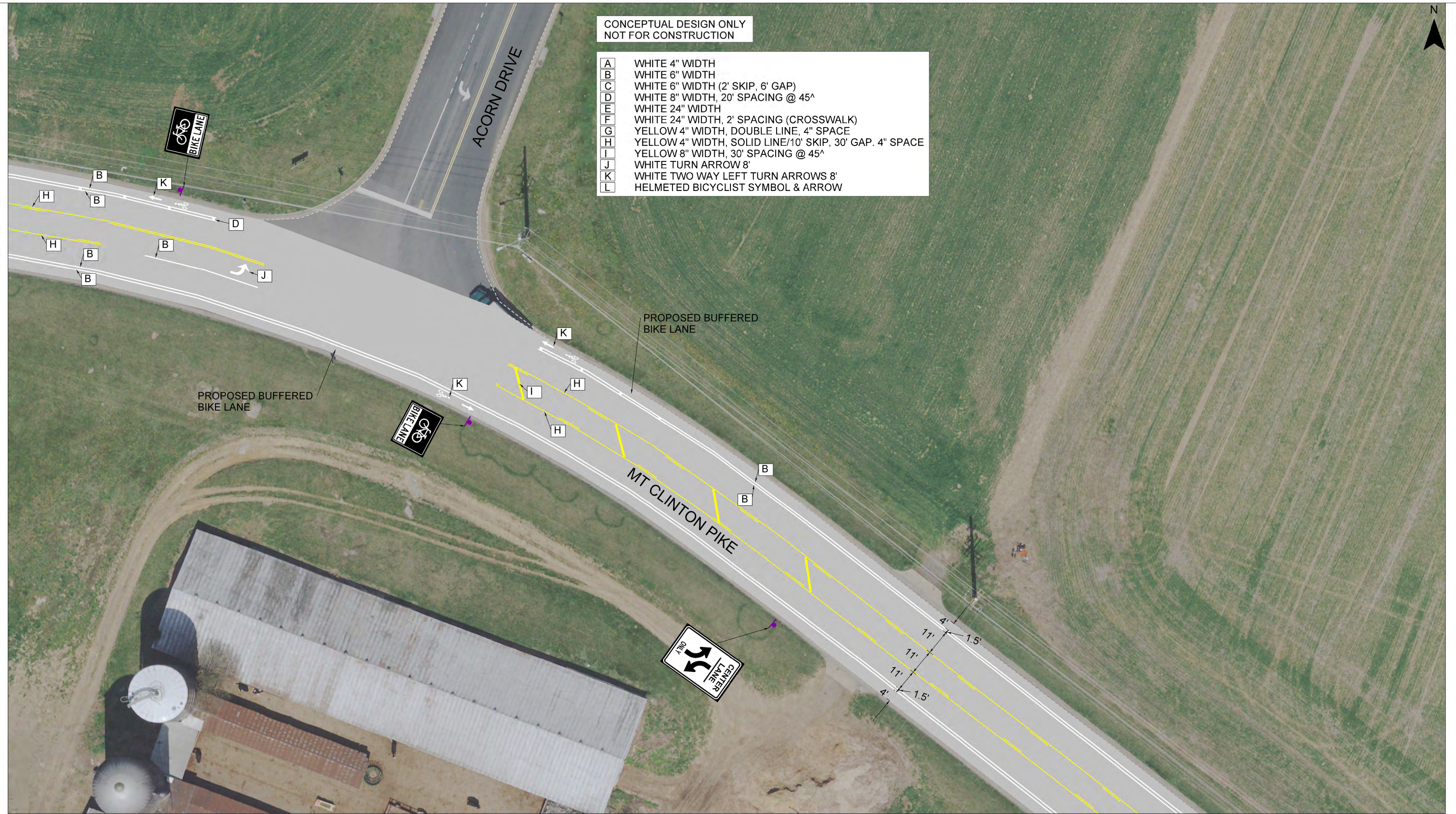
- A WHITE 4" WIDTH
- B WHITE 6" WIDTH
- C WHITE 6" WIDTH (2' SKIP, 6' GAP)
- D WHITE 8" WIDTH, 20' SPACING @ 45°
- E WHITE 24" WIDTH
- F WHITE 24" WIDTH, 2' SPACING (CROSSWALK)
- G YELLOW 4" WIDTH, DOUBLE LINE, 4" SPACE
- H YELLOW 4" WIDTH, SOLID LINE/10' SKIP, 30' GAP. 4" SPACE
- I YELLOW 8" WIDTH, 30' SPACING @ 45°
- J WHITE TURN ARROW 8'
- K WHITE TWO WAY LEFT TURN ARROWS 8'
- L HELMETED BICYCLIST SYMBOL & ARROW



Mt Clinton Pike Road Reconfiguration Concept
Harrisonburg, Virginia

Figure
7

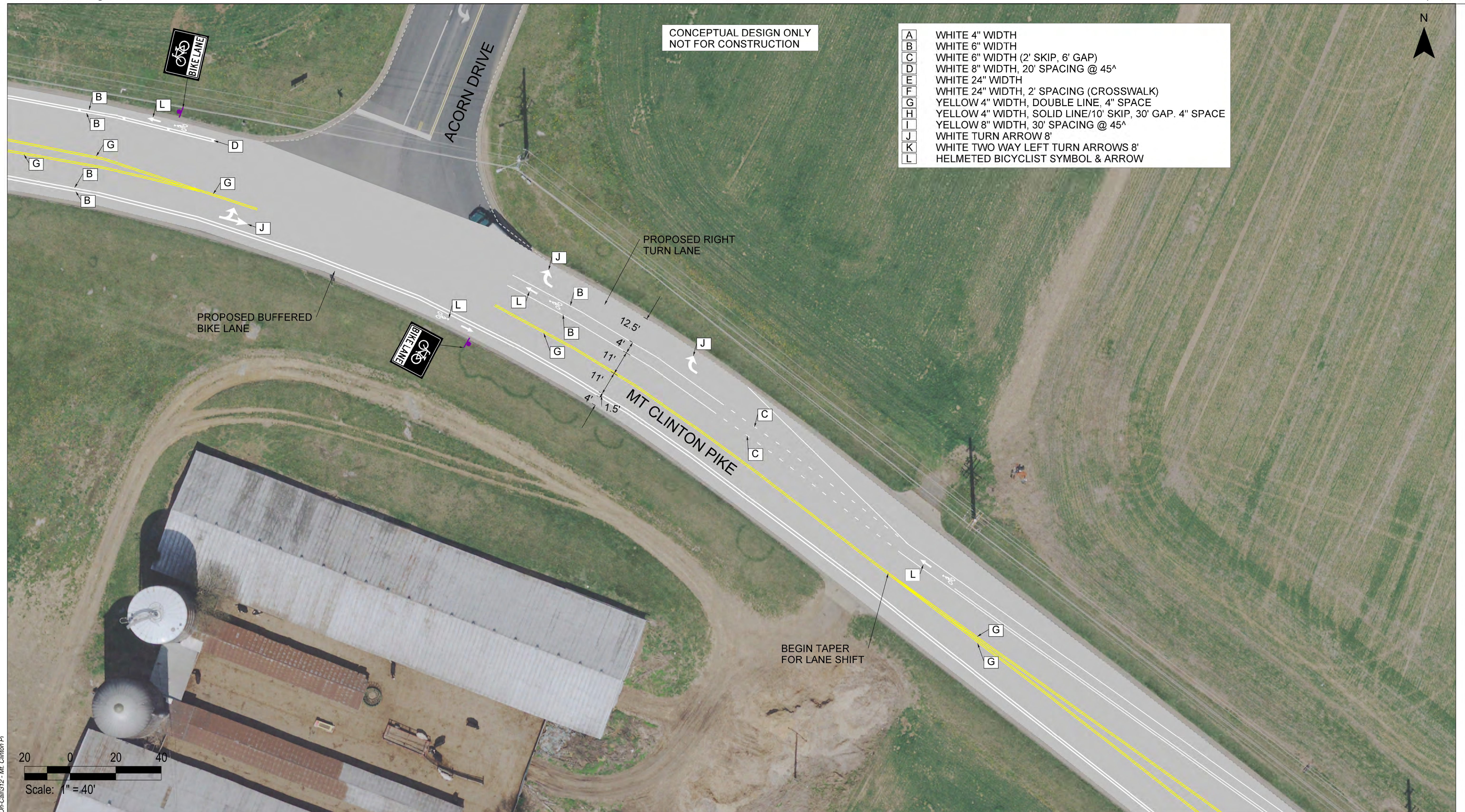
PL2121605 - VDOT TMFD On-Call312 - Mt. Clinton PI



Mt Clinton Pike Road Reconfiguration Concept
Harrisonburg, Virginia

Figure
8

PL2121605 - VDOT TMFD On-Call312 - Mt. Clinton Pk



Acorn Drive Intersection - Alternative 2

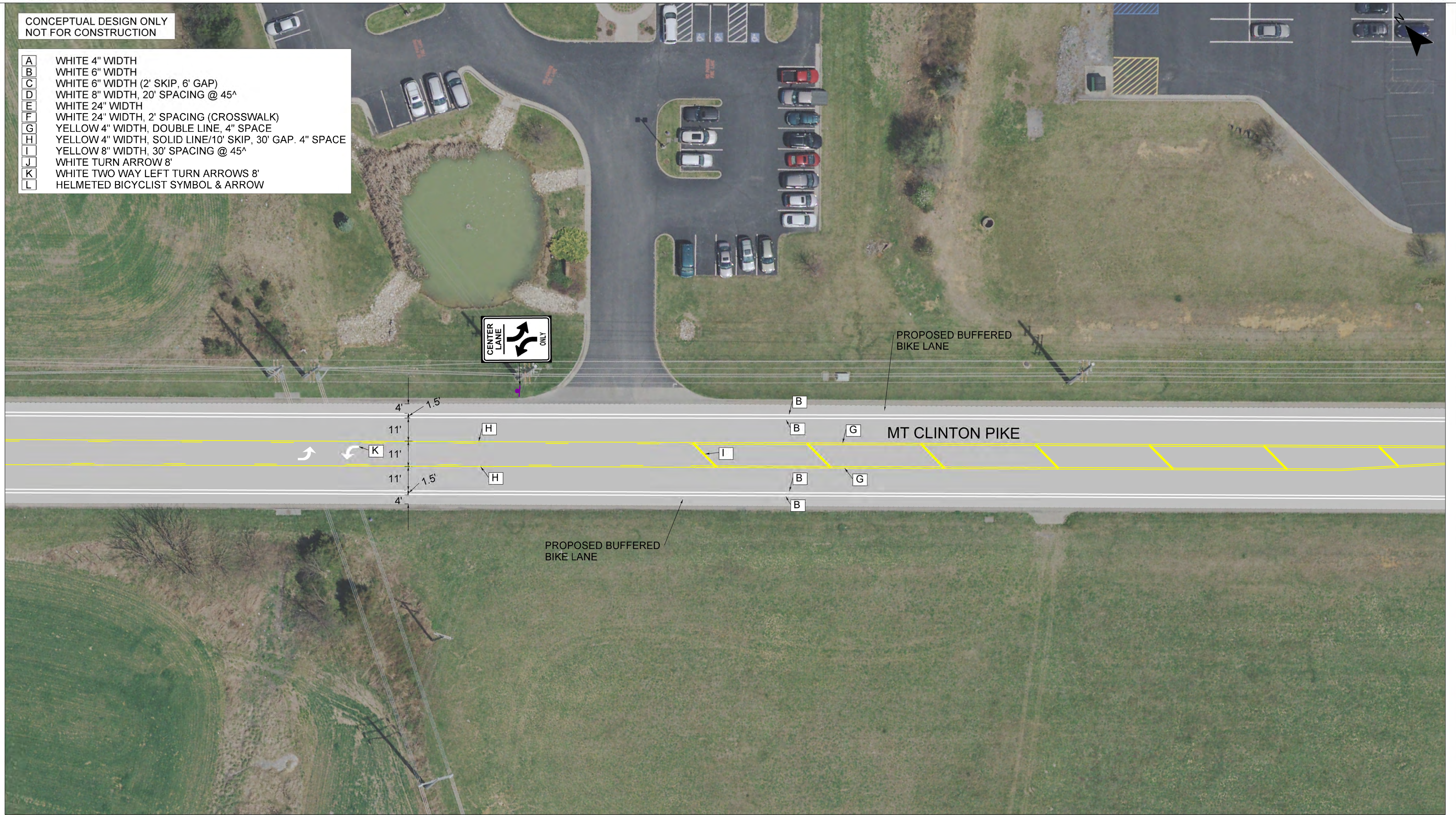
Mt Clinton Pike Road Reconfiguration Concept
Harrisonburg, Virginia

Figure
8

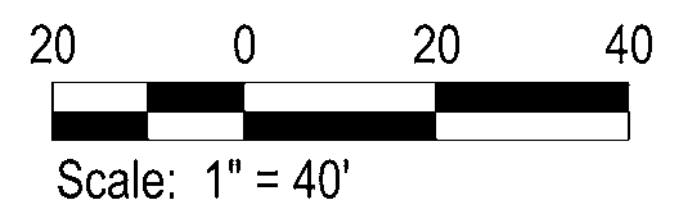
PL2121605 - VDOT TMPD On-Call/312 - Mt. Clinton Pk

CONCEPTUAL DESIGN ONLY
NOT FOR CONSTRUCTION

- A WHITE 4" WIDTH
- B WHITE 6" WIDTH
- C WHITE 6" WIDTH (2' SKIP, 6' GAP)
- D WHITE 8" WIDTH, 20' SPACING @ 45°
- E WHITE 24" WIDTH
- F WHITE 24" WIDTH, 2' SPACING (CROSSWALK)
- G YELLOW 4" WIDTH, DOUBLE LINE, 4" SPACE
- H YELLOW 4" WIDTH, SOLID LINE/10' SKIP, 30' GAP, 4" SPACE
- I YELLOW 8" WIDTH, 30' SPACING @ 45°
- J WHITE TURN ARROW 8"
- K WHITE TWO WAY LEFT TURN ARROWS 8"
- L HELMETED BICYCLIST SYMBOL & ARROW



H:\2121605 - VDOT TMRP On-Call\312 - Mt. Clinton PI



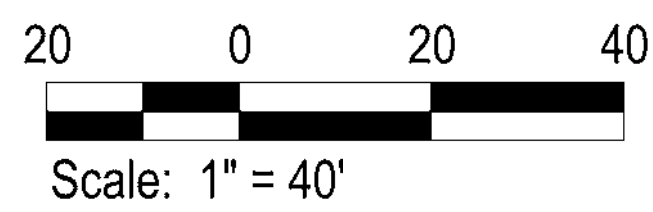
Mt Clinton Pike Road Reconfiguration Concept
Harrisonburg, Virginia

Figure
9



CONCEPTUAL DESIGN ONLY
NOT FOR CONSTRUCTION

- A WHITE 4" WIDTH
- B WHITE 6" WIDTH
- C WHITE 6" WIDTH (2' SKIP, 6' GAP)
- D WHITE 8" WIDTH, 20' SPACING @ 45°
- E WHITE 24" WIDTH
- F WHITE 24" WIDTH, 2' SPACING (CROSSWALK)
- G YELLOW 4" WIDTH, DOUBLE LINE, 4" SPACE
- H YELLOW 4" WIDTH, SOLID LINE/10' SKIP, 30' GAP, 4" SPACE
- I YELLOW 8" WIDTH, 30' SPACING @ 45°
- J WHITE TURN ARROW 8'
- K WHITE TWO WAY LEFT TURN ARROWS 8'
- L HELMETED BICYCLIST SYMBOL & ARROW



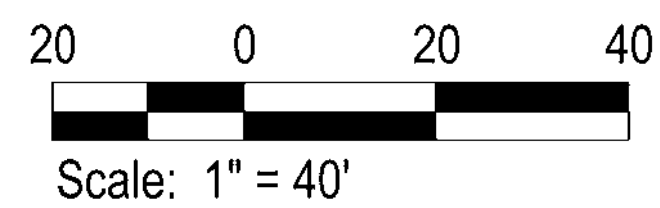
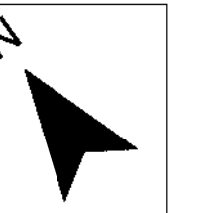
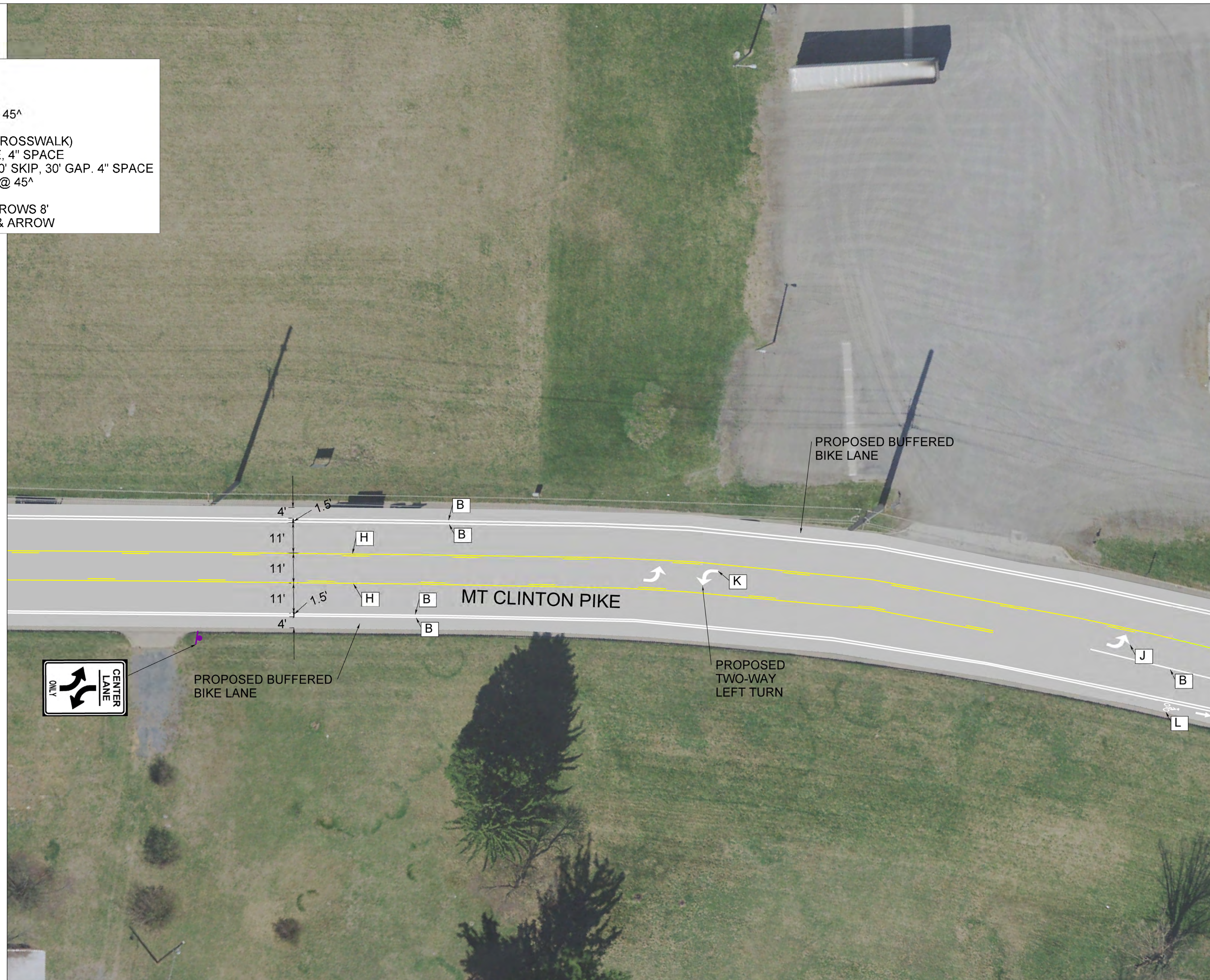
Mt Clinton Pike Road Reconfiguration Concept
Harrisonburg, Virginia

Figure
10

H:\2121605 - VDOT TMPD On-Call\312 - Mt. Clinton PI

CONCEPTUAL DESIGN ONLY
NOT FOR CONSTRUCTION

- A WHITE 4" WIDTH
- B WHITE 6" WIDTH
- C WHITE 6" WIDTH (2' SKIP, 6' GAP)
- D WHITE 8" WIDTH, 20' SPACING @ 45°
- E WHITE 24" WIDTH
- F WHITE 24" WIDTH, 2' SPACING (CROSSWALK)
- G YELLOW 4" WIDTH, DOUBLE LINE, 4" SPACE
- H YELLOW 4" WIDTH, SOLID LINE/10' SKIP, 30' GAP. 4" SPACE
- I YELLOW 8" WIDTH, 30' SPACING @ 45°
- J WHITE TURN ARROW 8'
- K WHITE TWO WAY LEFT TURN ARROWS 8'
- L HELMETED BICYCLIST SYMBOL & ARROW



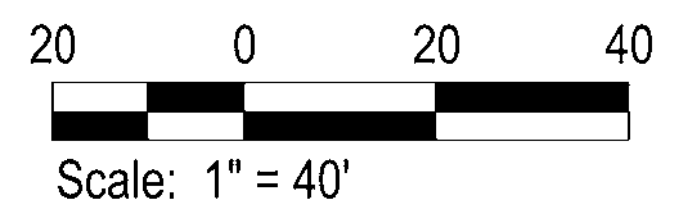
Mt Clinton Pike Road Reconfiguration Concept
Harrisonburg, Virginia

Figure
11

H:\2121605 - VDOT TMPD On-Call\312 - Mt. Clinton Pk

CONCEPTUAL DESIGN ONLY
NOT FOR CONSTRUCTION

- A WHITE 4" WIDTH
- B WHITE 6" WIDTH
- C WHITE 6" WIDTH (2' SKIP, 6' GAP)
- D WHITE 8" WIDTH, 20' SPACING @ 45°
- E WHITE 24" WIDTH
- F WHITE 24" WIDTH, 2' SPACING (CROSSWALK)
- G YELLOW 4" WIDTH, DOUBLE LINE, 4" SPACE
- H YELLOW 4" WIDTH, SOLID LINE/10' SKIP, 30' GAP. 4" SPACE
- I YELLOW 8" WIDTH, 30' SPACING @ 45°
- J WHITE TURN ARROW 8'
- K WHITE TWO WAY LEFT TURN ARROWS 8'
- L HELMETED BICYCLIST SYMBOL & ARROW



Mt Clinton Pike Road Reconfiguration Concept
Harrisonburg, Virginia

Figure
12

PL2121605 - VDOT TMPD On-Call312 - Mt. Clinton PI