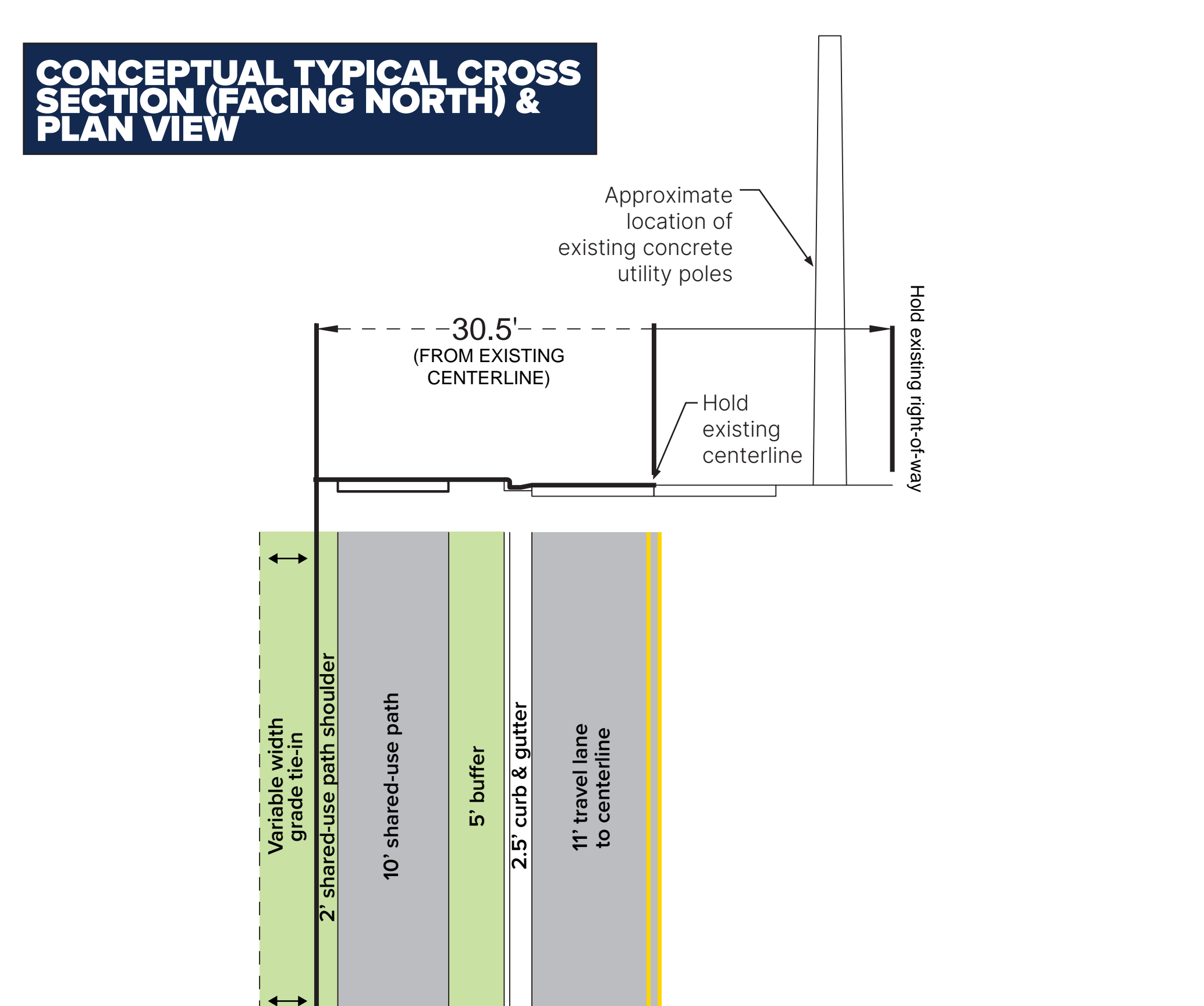
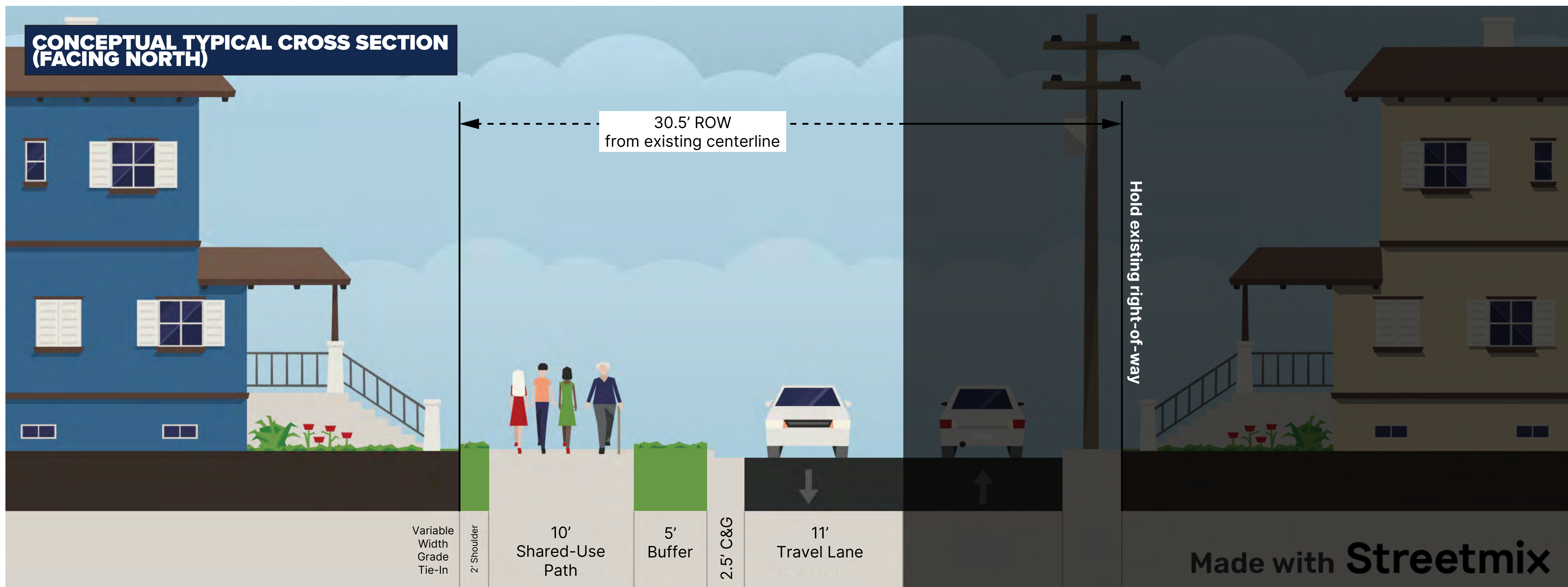
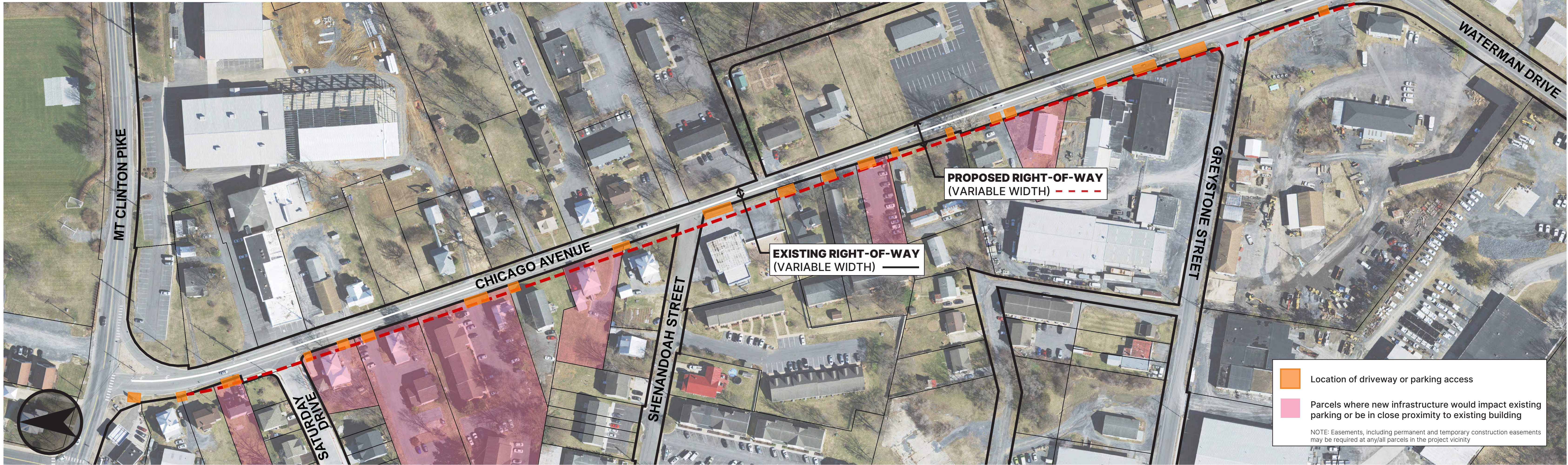


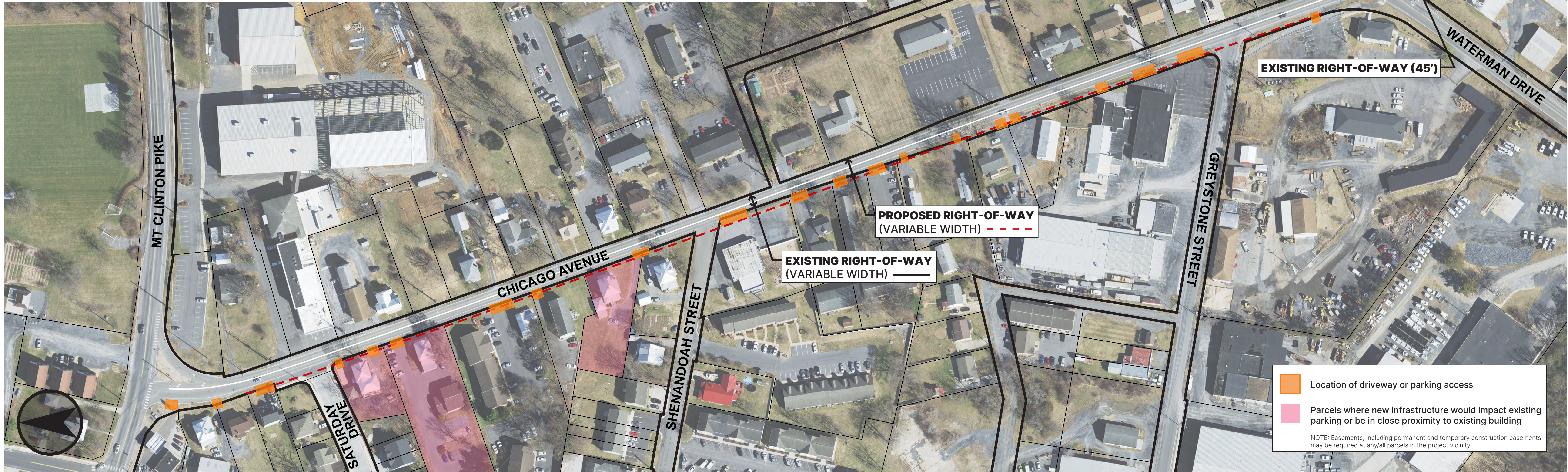
# CHICAGO AVENUE | WEST-SIDE IMPROVEMENTS | SHARED-USE PATH

IMPROVEMENTS TO WEST-SIDE ONLY WITH 10' SHARED-USE PATH & 5' BUFFER

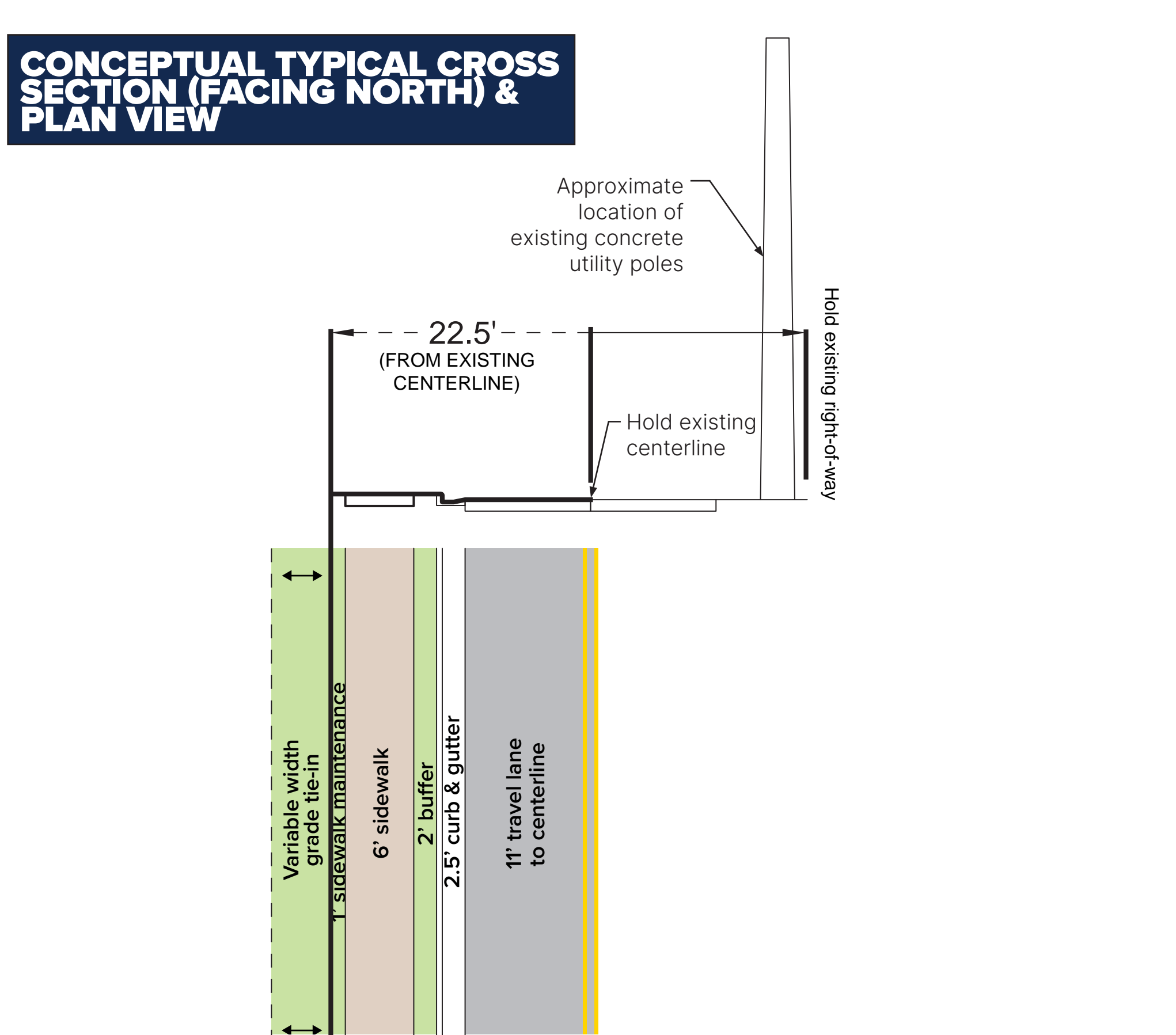
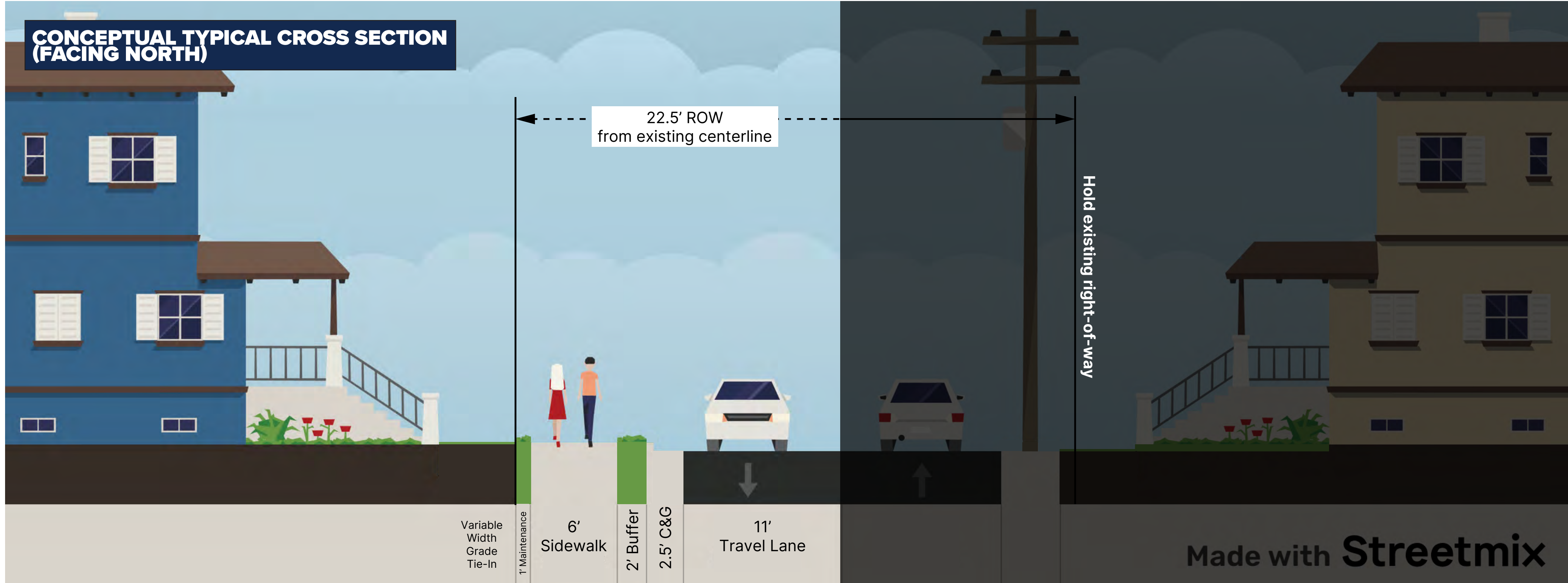


# CHICAGO AVENUE | WEST-SIDE IMPROVEMENTS | SIDEWALK

IMPROVEMENTS TO WEST-SIDE ONLY WITH 6' SIDEWALK & 2' BUFFER

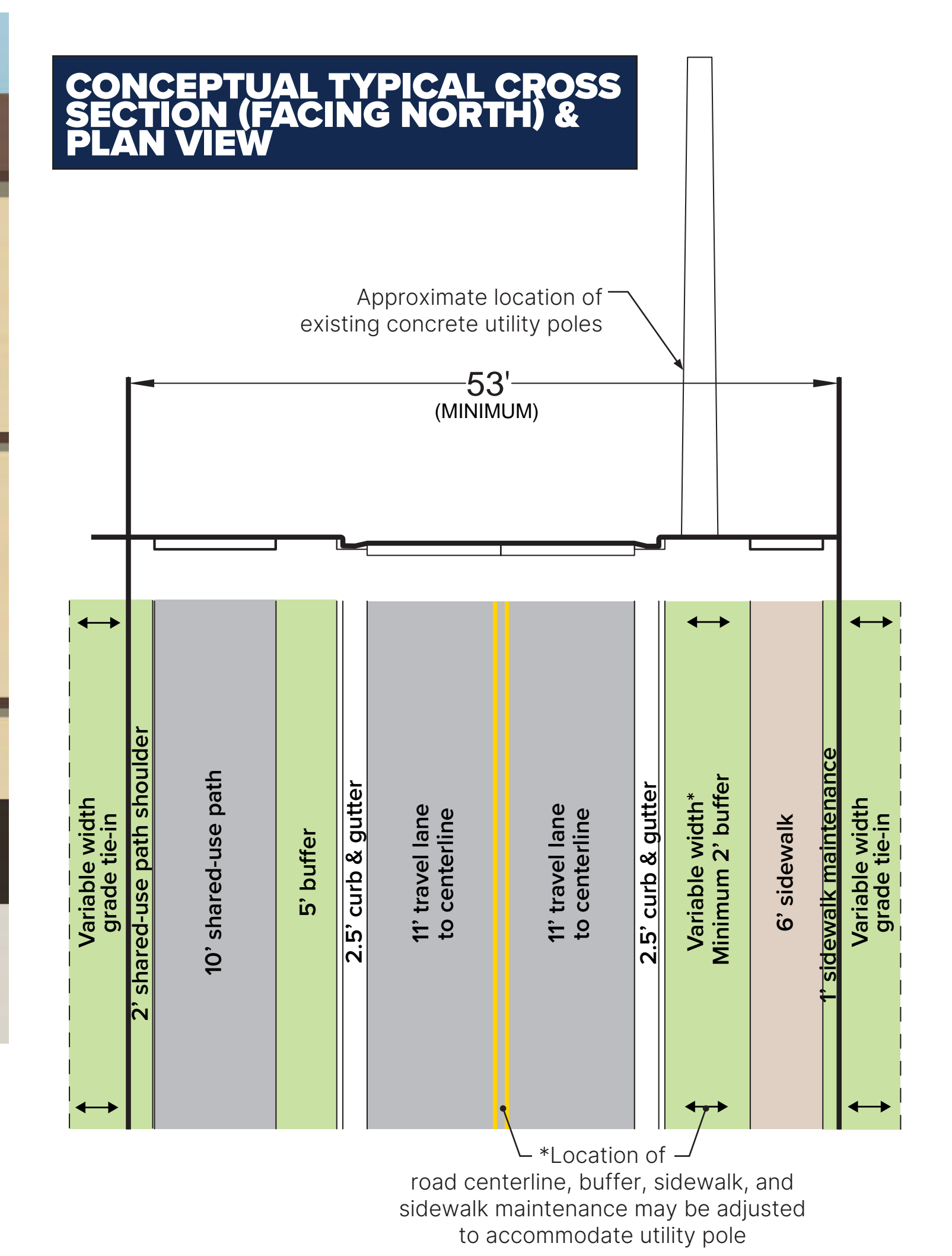
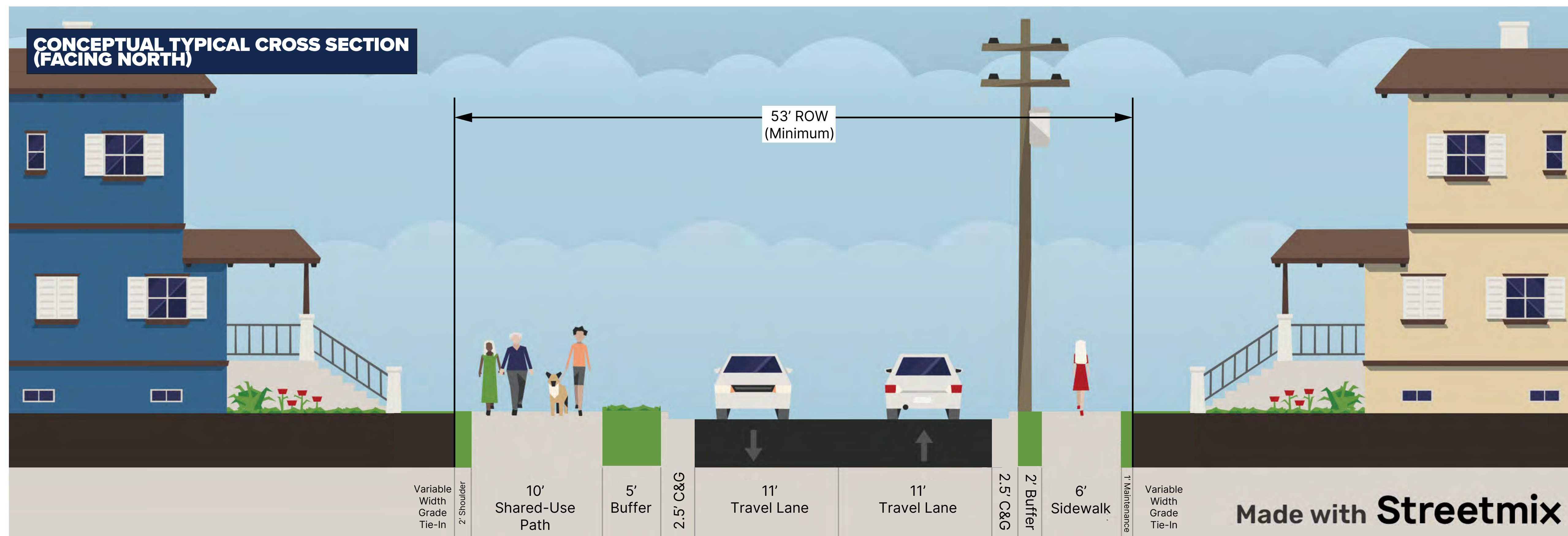
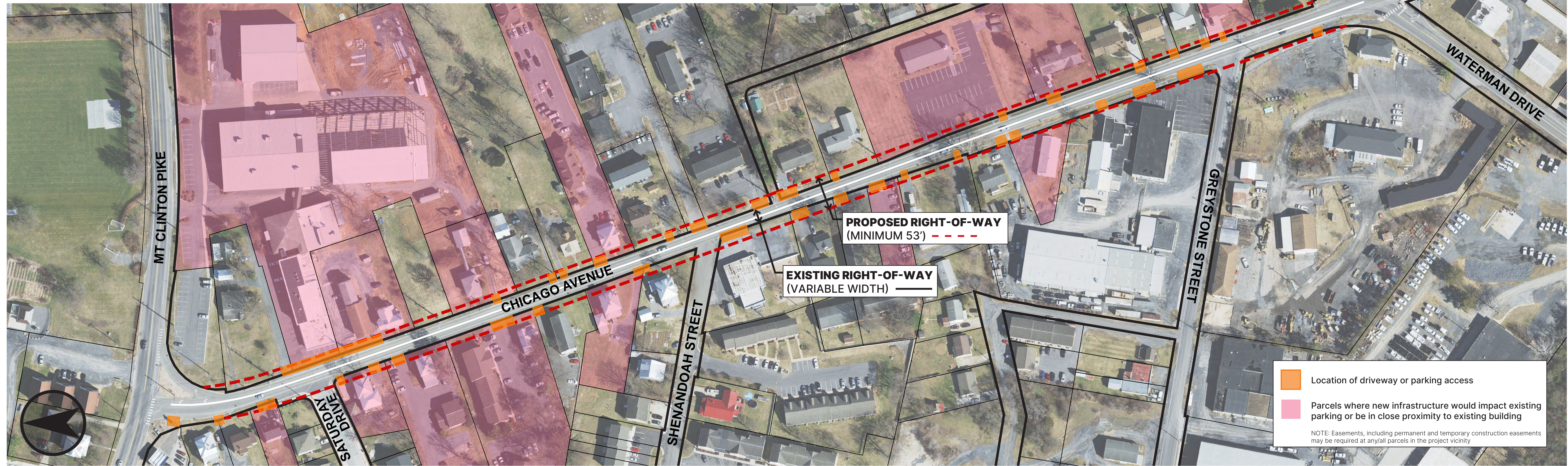


■ Location of driveway or parking access  
■ Parcels where new infrastructure would impact existing parking or be in close proximity to existing building  
 NOTE: Easements, including permanent and temporary construction easements may be required at any/all parcels in the project vicinity



# CHICAGO AVENUE | IMPROVEMENTS ON BOTH SIDES | SHARED-USE PATH & SIDEWALK

IMPROVEMENTS TO BOTH SIDES WITH 10' SHARED-USE PATH ON THE WEST AND 6' SIDEWALK ON THE EAST



# CHICAGO AVENUE | IMPROVEMENTS ON BOTH SIDES | SIDEWALK & UPHILL BIKE LANE

IMPROVEMENTS TO BOTH SIDES WITH 6' SIDEWALK ON THE WEST AND 5' CLIMBING BIKE LANE ON THE EAST

